

WOOLFF

89 CHARLOTTE ST
LONDON
W1T 4PU

T: +44 (0) 207 631 0551
www.woolffgallery.co.uk
info@woolffgallery.co.uk

Oona Hassim

The Woolff Gallery is delighted to present a dynamic new collection of artworks by Oona Hassim.

Whilst many of Hassim's works focus on crowds and the passage of life that traverses her home city of London, in 2012, Hassim journeyed to New York to explore another city renowned for its speed and vibrant population. During this short period, she produced works that captured the Occupy movement and iconic areas of New York City, such as Times Square and Grand Central Station. These works will be displayed for the first time at Woolff Gallery during this exhibition.

Graduating from her Fine Art degree at Central Saint Martin's College of Art in 2000, Hassim was awarded the Kate Barton Scholarship. Her work appears in the London Institute Collection, and has been exhibited globally, including several appearances at London's Royal Academy, as well as the prestigious Jerwood drawing prize.

NICK WOOLFF



My latest series of work explores the powerful and turbulent energy embodied in recent demonstrations, as well as the calmer moments of the urban environment.

My work explores the different atmospheres surrounding surging demonstrators, exuberant marathon runners and revelling masses, as well as individual pedestrians, flowing through the city. I am drawn to the achingly beautiful luminescence of the natural and artificial light shining through and reflecting off the flags of demonstrators, sides of buildings and leafy trees. Often these sublime moments are juxtaposed against the wild desperation of passionate demonstrators, or the world weary energy of trudging pedestrians.

It is this disparity, and the contrast of the rhythms of the city with its crowds that I find mesmerising.

OONA HASSIM



Oona Hassim
Jubilee 2014
Oil on canvas
166 x 116cm

Opposite page:
Oona Hassim
London Marathon 2014
Oil on Canvas
91 x 122cm



Oona Hassim
Highbury corner, sleet
Oil on Canvas
61x61cm

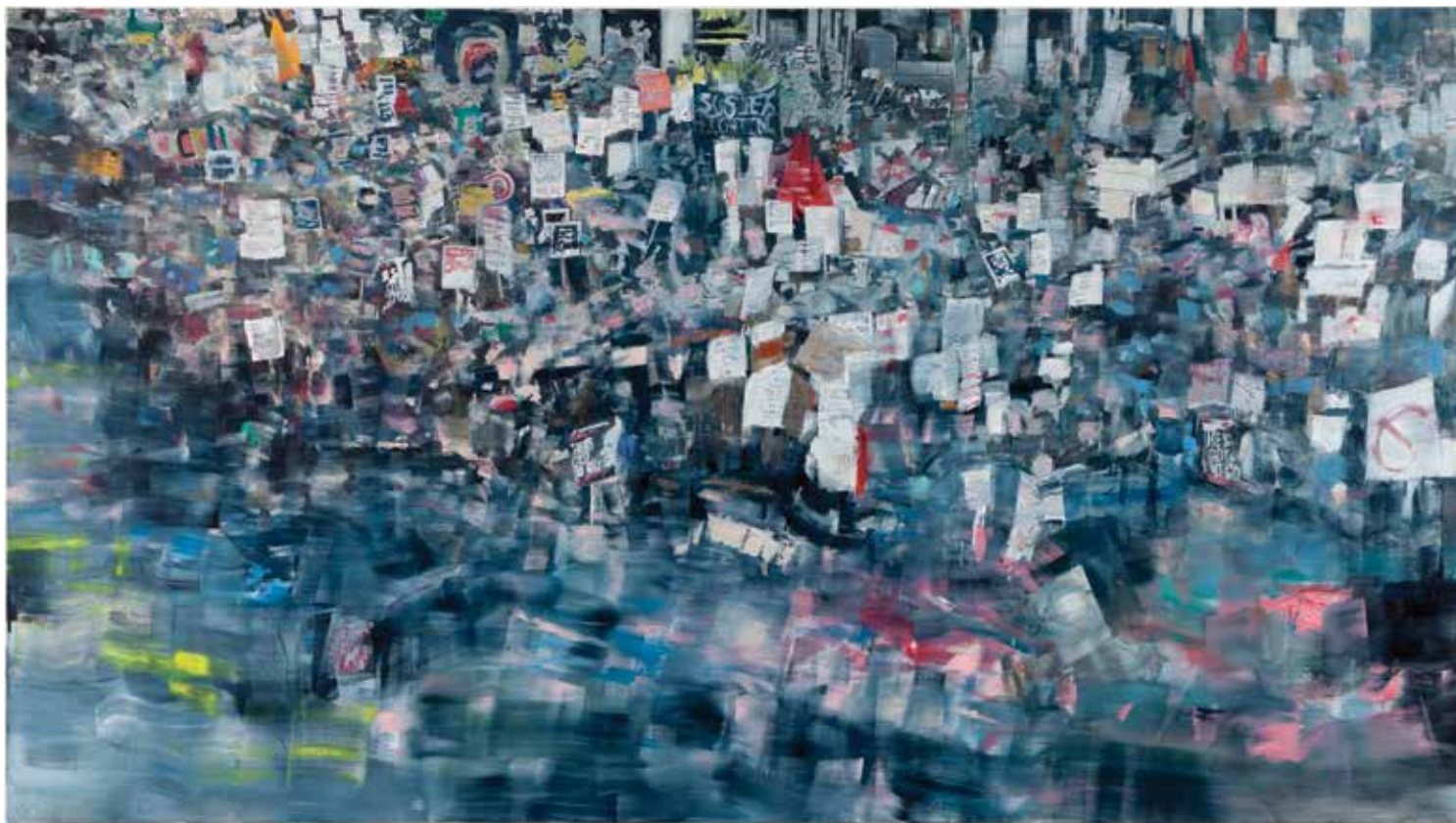




Oona Hassim
Trafalgar Square after the rain
Oil on canvas
61 x 61cm

Oona Hassim
Portland place - after the rush hour
Oil on canvas
91 x 91cm





Oona Hassim
Student Demo, Charing Cross 2011
Oil on canvas
130 x 230cm



Oona Hassim
Save the Whittington Demo 2014
Oil on canvas
122 x 122cm



Oona Hassim
Gaza Demo 2014
Oil on Canvas
104 x 104cm



Oona Hassim
Climate Change March, 2014
Oil on canvas
71 x 90cm



Oona Hassim Student Demo 2014
Oil on canvas 137 x 89cm



Oona Hassim
Occupy Spring
Oil on canvas
91 x 91cm



Oona Hassim
May Day, Union Square 2012
Oil on canvas
122 x 152cm



Oona Hassim
Occupy New York
Oil on canvas
122 x 152cm



Oona Hassim
Grand Central Station 2012
Oil on Canvas
91 x 91cm

Oona Hassim
Times Square
Oil on Canvas
91 x 91cm





Oona Hassim
Jubilee series
35 x 40cm (framed size)
Oil pastel drawing



Oona Hassim
Whittington Demo
35 x 40cm (framed size)
Oil pastel drawing



Oona Hassim
NHS Demo

Oil pastel drawing



Oona Hassim
Occupy London, Spring
35 x 40cm (framed size)
Oil pastel drawing



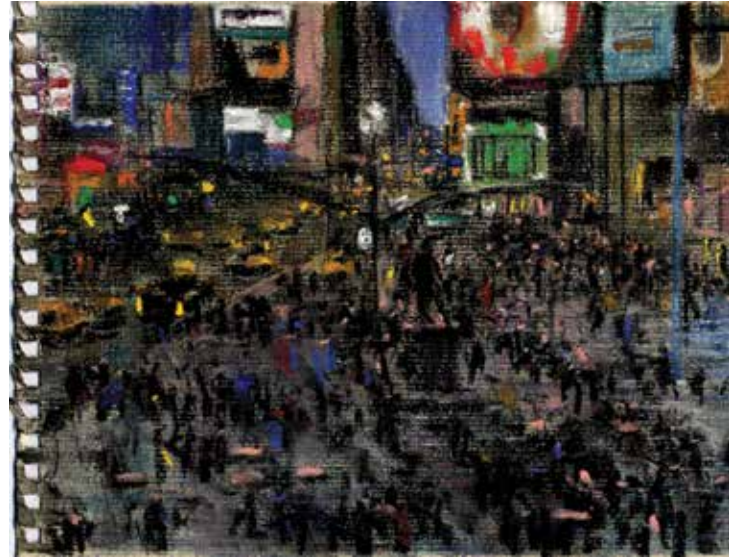
Oona Hassim
NYC Grand Central Station
29 x 33.5cm (framed size)
Oil pastel drawing



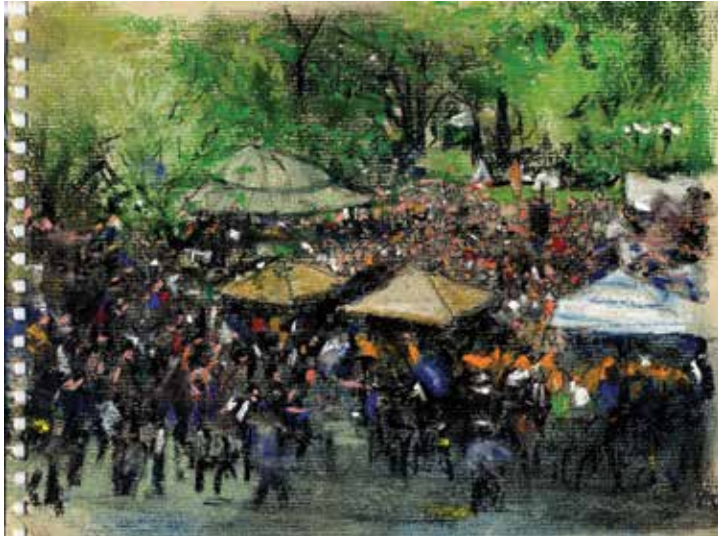
Oona Hassim
Piccadilly Circus: night time
35 x 40cm (framed size)
Oil pastel drawing



Oona Hassim
NYC Reflections
35 x 40cm (framed size)
Oil pastel drawing



Oona Hassim
NYC Times Square
28 x 33.5cm (framed size)
Oil pastel drawing



Oona Hassim
NYC Union Square: Occupy demo
29 x 34.5cm (framed size)
Oil pastel drawing



Oona Hassim
NYC May Day Union Square
37 x 44cm (framed size)
Oil pastel drawing



Oona Hassim
NYC Times Square: night
36.5 x 39cm (framed size)
Oil pastel drawing



Oona Hassim
NYC Times Square: night
33 x 34cm (framed size)
Oil pastel drawing

WOOLFF

WOOLFF

